

*We exist for brave souls who dare to be different,  
no safe, high street, easy outcome for us.  
It takes a certain person to consider their desires,  
to act decisively and then wait with patience.*

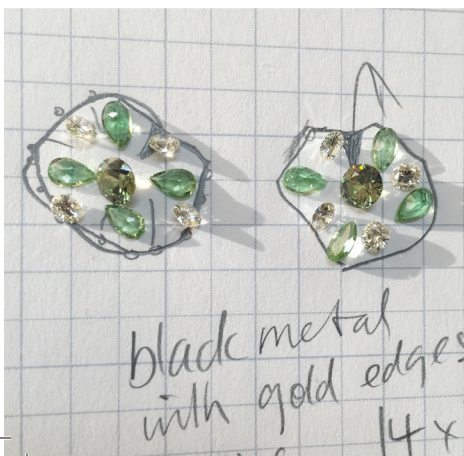
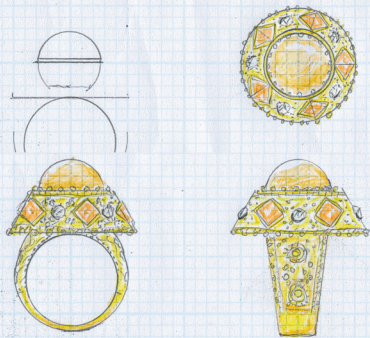
*Jeweller to the Lost:  
Barbara Heath, Malcolm Enright,  
Juan-Luis Gonzalez,  
and our studio bunnies thank you all.*

### 2016 'Jeweller to the Lost' COMMISSIONER'S LIST:

- Susan Ostling** - Her must-have 'curved bar' drusy quartz & onyx disc earrings in rose gold  
**Amelia Gundelach** - Enthusiastic revision of some early © Bh things + Ed's wedding ring  
**Mary O'Shea** - Tapered block design earrings to match her Tahitian pearl strand  
**Private Sydney** - Little planter small sculpture with bud, bloom and fading flower gems  
**Nino & Grace di Marco** - Four strand freshwater pearl bracelet, his ruby anniversary surprise  
**Bob Bidwell** - Little birdy brooch for Alice, 'pipet' design in bronze with yellow sapphire eye  
**Amanda Gorely** - Memento domum earrings with Keshi pearls, marquise sapphires and diamonds  
**Marty & Phoebe** - Hand fabricated wedding rings with secrets (and added magic)  
**Mary Edwards** - Antique pearlshell 'button' clasp to enhance a beautiful strand of pearls  
**Wokka for Lee Primmer** - Ring settings checked, resurfacing and returned to Bermagui NSW  
**Caroline Markland** - Citrine bracelet from Melbourne 15 years ago restrung and beads replaced  
**Deborah Goakes** - Her special 'bud' ruby earrings in palladium white gold and safety clasp  
**Sally Duhig** - Pearl necklet with matt onyx pill beads, interspersed with oxidised silver tube beads  
**Joshua & Holly** - Their wedding rings styled separately but matching her diamond engagement ring  
**Elena Yusim** - Pendant with three graduated Tahitian pearls in Barbara's round profile stick design  
**Red Design** - A little attention to wear on wonderful 'ecclesiastic thurible' requested by Gregory Gilmore  
**Carol Watson** - Complete rejig with removed settings, recycled stones reoriented into same ring  
**Andrea Hayward** - Major #1 & #2 in-line necklaces incorporating her wonderful gem collection  
**Caroline Cotton** - A unique corded band ring with paired diamonds in white gold  
**Jenny McCaughey** - Barbara's earring enhancers with a fine pair of Brazilian emeralds  
**Peter & Josephine Hill** - Anniversary project - two asymmetric 'ice ray' lattice gold and diamond rings  
**Carol Watson** - Marquise cut ruby in 'chenier' style ring in rose gold with 18 diamonds  
**KT for Karl** - Cufflinks for him using Barbara's 'chrysanthemum' symbols and oval hinged back  
**Private Toowoomba** - Her own designed 'emerald cut-out cross' ring, fabricated by the studio  
**Caroline Cotton** - Her fab indicolite tourmaline strand with diamond 'shepherd's hook' clasp  
**Private Sydney** - Articulated drop earrings with open back set Australian zircons & pink sapphires  
**Jane Haley** - All her diamonds, collected over a lifetime into one chunky pavé ring  
**Paula Rogers** - The right way to suspend her quartz pendant, with onyx and gold spacer beads  
**Leesa Hickey** - Birthday necklace for Sheona, a masked, running silver fox with gold filigree detail  
**Elena Yusim** - Kilroy's gem from Bali, 'roman claw' set with a chain in alternating rose and yellow gold  
**Tim McGrath** - Another family milestone marked with a commissioned piece for their daughter Jill  
**Andrea Hayward** - Tahitian pearls multiple gem set items reconfigured as an adjustable necklace  
**Andrea Hayward** - Barbara's 'house' earrings with her pendant aquamarines  
**Gael Phillips** - antique tortoiseshell from our collection used to replace a lost earring  
**Jenny McCaughey** - Beautiful merging of diamonds and ruby into platinum ring for her sixtieth birthday  
**Emma Megson** - The last magic ring in the bonding process, Ray's handmade wedding band  
**Private Sydney** - Our gem goddess strikes again, "make me one of these articulated gem pendants"  
**Caroline Mercer** - Repairs to significant family pieces for mother & daughter  
**Private Brisbane** - Jewellery from two generations re-designed as two 'in-line' necklaces plus plus  
**Allison Fish & Brad Sherman** - Classic © Bh 'leaf lattice' wedding band with diamonds  
**Ruth Woods** - Three in one task, oval gem pavé ring, bail for her baroque pearl & assay/credit her gold  
**Mary Ann Ferrier** - Earrings in hammered finish argentium silver with her baroque pearls  
**Wanda & Michael Hayes** - Fine gems from a family collection, her sculpted pendant, his gem tie clip  
**Steve & Deb Harvey** - Her wedding ring back for restoration and a new Burmese ruby  
**Britt Owens** - South sea baroque pearls in Barbara's minimal 'tapered block' earring design  
**Andrea Barlow** - Memento familia 'saddle' ring, using gems and details from her five rings  
**Mark & Despina** - He bought the garnets, she bought the gold pearl, her "Oh my God" inheritance ring  
**Gail Tarditi** - An aquamarine brooch for a much loved sister's birthday  
**Barker Women** - Another family affair disassembling old to make new jewels  
**Nat & Phil** - Handmade wedding bands with different coloured golds with stamped code  
**Sheridan van Asch** - A double diamond ring for her little finger + a found texture ring for David  
**Catherine Bull** - Newer tube section 'in-line' bracelet developed to set off her antique corals  
**Raquel Cobb** - Pandanus earrings combining dished 'lace' design, oxidised silver, high carat gold & gems  
**Sue Pavasaris** - A long awaited birthday gift to herself, open backed wrap setting, amber 'rose' ring



© Bh. Despina Macris 2016  
 Gold South Sea Pearl  
 Spessartite Garnets  
 22 ct. gold - old cut diamonds  
 Size L



**YOU ARE INVITED TO OUR  
 ANNUAL Jeweller to the Lost SALE  
 at the Wilston garden studio for  
 commissioners and their  
 accompanied friends . . .**

**SATURDAY 10 DECEMBER 2016**

**9am - 4pm**

**SUNDAY 11 DECEMBER 2016**

**10am - 4pm**

and up until the studio closes  
**FRIDAY 16 DECEMBER 2016**

We were one of fifty four artists in the  
 sculpture competition for the new Cbus building  
 at 1 William Street, Brisbane in 2014.

Our concept was chosen for the foyer and we  
 worked with curator; Jacqueline Armitstead,  
 architect; Mark Damant, engineers; Rod Bligh and  
 Simon Lewis, fabricators; Dee Wallace and John  
 Edwards at G&B Stainless.

Install day in September 2016 went perfectly  
 and our three suspended works entitled:  
 'New Nature' have already drawn considerable  
 attention and positive reaction. Detail of #3 shown  
 bottom right column of images.

