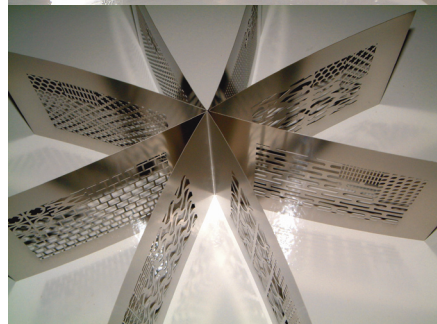
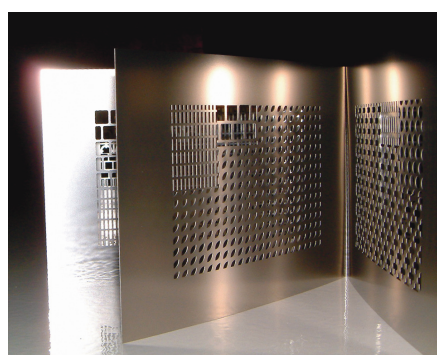




Queensland Art Gallery
Barbara Heath - Jeweller to the Lost
Solo Exhibition.
October 15 2005–March 26 2006.
www.qag.qld.gov.au
www.australianartbooks.com.au



Artist Book entitled: Freewheeling 2005.
State Library of Queensland collection,
Craft Queensland in association.



Barbara in Montreal 2006.

Barbara Heath CURRICULUM VITAE: [Version #27 - dated: 4 June 2013]

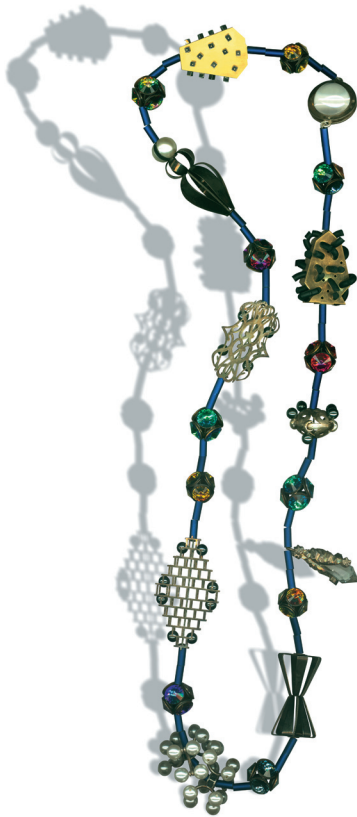
1954 Born in Sydney, Australia.
1970–72 Studied gold-and-silver-smithing at the Royal Melbourne Institute of Technology, Melbourne. Apprentice to Laszlo Puzsar.
1972–82 Jeweller and retailer in Sydney.
1983 Established studio in Brisbane.
1987 Studied contemporary jewellery at Parsons School of Design in New York.
1990 Developed and produced Barbara Heath range of jewellery, sold and exhibited internationally.
1990 Developed 'Jeweller to the Lost' commissioned and Bespoke studio jewellery.
1997 Commenced large scale sculptural work from Brisbane.

SOLO EXHIBITIONS

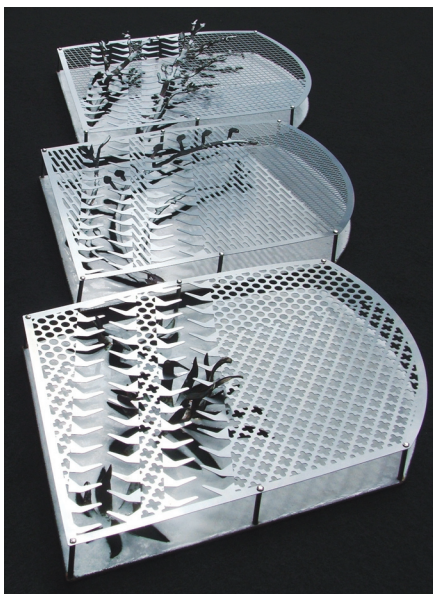
2013 Tinsmith: An Ordinary Romance, Touring the final 4 Regional Galleries.
2013 Tasmanian Landscapes: New Jewellery from Barbara Heath, Handmark Gallery, Hobart.
2012 Tinsmith: An Ordinary Romance, Touring 5 Regional Galleries.
2011 Another Time (3): New Jewellery from Barbara Heath, Handmark Gallery, Hobart.
2010 Tinsmith: An Ordinary Romance, Gallery Artisan, Brisbane. [exhibition catalogue].
2008 Another Time (2): New Jewellery from Barbara Heath, Katherine Kalaf Gallery, Perth.
2007 Another Time (1): New Jewellery from Barbara Heath, A Day on Earth, Brisbane.
2005 Barbara Heath: Jeweller to the Lost, Solo Exhibition. Queensland Art Gallery, Brisbane. [exhibition catalogue].
2000 Guardian Spirits, Andrew Baker Art Dealer, Brisbane.
1999 A Little Birdy Told Me, Craft Queensland Gallery, Brisbane.
1997 Patron Maker and Jewel, Brisbane City Gallery, Brisbane.
1996 Clarence 'Rockefeller' Chafee, Pløtz Gallery, Brisbane.
1994 Stock Show, Gallery IF, Tokyo.
1989 Distelfink Gallery, Melbourne.
1988 Symbols for Personal Definition, Studio Noko, Sydney.
1987 New Icons, (with Sheridan Kennedy), Roz MacAllan Gallery, Brisbane.

SELECTED GROUP EXHIBITIONS

2013 Silver: Collaboration with Marian Drew, Museum of Brisbane, November–April.
2012 Life in your Hands: Lake Macquarie City Art Gallery, NSW. National Tour 2012–2013.
2011 Tinker, Tailor, Soldier, Sailor: Artisan, Brisbane. September–November, then touring nationally.
2011 Language of Art: Sculptural Exhibition, The Jewellery & Art Gallery @ Carrington's, Noosa Junction.
2010 The Ipswich House: Heritage house portraits by contemporary Queensland artists, Ipswich Art Gallery, Ipswich. September–December.
2009 Mayo Exhibition: Seven jewellers and seven sculptors, Gold Coast City Art Gallery, March–May.
2009 Fresh start-New directions: Aaron Faber Gallery, NYC, USA.
2009 Mod Squad: Touring exhibition of Contemporary design + objects, Logan Art Gallery, Redcliffe City Gallery, Cairns Regional Gallery, 3 venues, February–September 2009.
2008 The Mayo Festival, St Margaret's Gallery: 7 jewellers and 7 sculptors, October.
2008 Recognising Excellence: Redcliffe Craft Award show. 2nd Price recipient. June–July.
2007 Build a Necklace: A bead from every Artist, e.g.etal, Melbourne. December.
2007 Process Documented: Aaron Faber Gallery, NYC, USA. October–November.
2007 50 Brooches: CQ Gallery, Brisbane. April–May.
2006 Another Dimension: 482 & Michel Sourgnes. Brisbane. June–July.
2006 Artists' Books from 'The Centre for the Artist Book': Research Library & Archive, Art Gallery of New South Wales. May–August.
2006 Baubles, Bangles & Beads: Bathurst Regional Gallery Touring Exhibition [exhibition catalogue].
2006 Libris Awards: The Australian Artists' Book Prize. Artspace Mackay, Mackay.
2006 Luminaries: new work by six Australian jewellers, SCA Galleries, Sydney.
2005 The Ring, the new jewellery: 22 designers, Katherine Kalaf Gallery, Perth.
2005 Tag: Jewellery + Fashion (with Easton Pearson) Craft Queensland.
2005 Sufferance: women's artists' books (Barbara Heath in collaboration with Malcolm Enright), a partnership exhibition between Craft Queensland and the State Library of Queensland, Brisbane [exhibition catalogue].
2005 Collectables: Craft Queensland Gallery, Brisbane.
2005 Artist's Choice: Aaron Faber Gallery, NYC, USA.
2005 Valentines Show: De Novo, Palo Alto, USA.
2004 Women at Work: Katherine Kalaf Gallery, Perth.
2004 Visible Darkness: Logan City Gallery, Logan, Brisbane.
2003 Chromophobia: Studio Ingot, Melbourne [exhibition catalogue].
2002 Visible Darkness: Queensland Artworkers Alliance Contemporary Space, Brisbane.
2001 Guild Unlimited: Craft Victoria, Melbourne, and travelled to Edinburgh School of Art, Edinburgh [exhibition catalogue].
1999 Artistic Australia: TAJ Enterprise/Austrade touring galleries and retailers in Japan.
1997–99 Contemporary Vessels and Jewels: Australian Fine Metalwork Shanghai Museum, Shanghai and toured Queensland [exhibition catalogue].



The Necklace of Princess Fiormondi,
Collection of Arts Queensland.



Life in your Hands: Sculpture, Stainless
steel, white enamel fusion on copper sheet.
Lake Macquarie City Art Gallery, NSW.
National Tour 2012–2013.



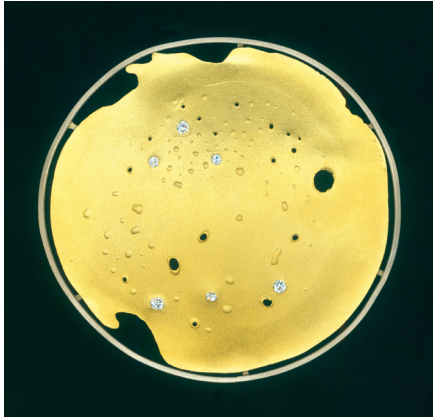
1999 Circles about the Body: University of Tasmania Gallery, Launceston [exhibition catalogue].
1996 Do It: Institute of Modern Art, Brisbane.
1996 Bolt: College of Art, Griffith University, and toured Queensland [exhibition catalogue].
1995 Out of the Void: Mad and Bad Women from the Queensland Art Gallery Collection, Queensland Art Gallery, and toured Queensland [exhibition catalogue].
1993–94 Art of Adornment: National Museum of Modern Art, Kyoto, and travelled to venues in Tokyo and Fukuoka in Japan, Seoul in Korea, and in Indonesia [exhibition catalogue].
1993 Exhibit A: Isn't Studios, Brisbane.
1993 Artright in the Public Eye: The School of Arts, Brisbane.
1992 Aid for Tibet: Museum of Contemporary Art, Brisbane.
1992 Local Heroes: Australian Designers of the Here & Now, Ipswich Regional Gallery, Ipswich [exhibition catalogue].
1991 First Australian Contemporary Jewellery Biennale: 1991 Jam Factory Craft & Design Centre, Adelaide.
1991 The Body in Question: University of Tasmania, Launceston.
1991 Contemporary Jewellery in Australia & Japan: Studio Com, Kyoto.
1990 Otto Kunzli Workshop: Sydney College of the Arts, Sydney [exhibition catalogue].
1989–90 Australian Fashion: The Contemporary Art, Victoria and Albert Museum, London; Powerhouse Museum, Sydney; and travelled to venues in Tokyo Japan, and Seoul in Korea [exhibition catalogue].
1989 Regalia: REMO, Sydney.
1989 Queensland Jewellers: Queensland House, London.
1989 Fashion Design Council, Nescafé Fashion 89: Sydney and Melbourne.
1988 Excellence in Design: Queensland College of Art, Brisbane.
1988 AXIS–FILE: Sites of Disclosure, AXIS-ART Projects, Brisbane, New York, London [exhibition catalogue].
1988 A Contemporary Caste: A Homage to Women Artists in Queensland, Past and Present, Centre Gallery, Surfers Paradise [exhibition catalogue].
1988 Classics: Crafts Council of New South Wales, Sydney.
1988 Concepts for Perception: Roz MacAllan Gallery, Brisbane.
1987 Makers Mark Award: Brisbane, Melbourne, Sydney.
1987 Survey of Queensland Craft: Crafts Council of Queensland, Brisbane.
1987 Little Alternatives, Crux Gallery, Brisbane.
1987 Paperworks x 7, Roz MacAllan Gallery, Brisbane [exhibition catalogue].
1987 Covers: Studio Noko, Sydney.
1986 Christmas Show: Contemporary Jewellery Gallery, Sydney.
1986 Precious Pieces: Lake Russell Gallery, Coffs Harbour.
1986 Survey of Queensland Craft: Crafts Council of Queensland, Brisbane.
1986 Fibre and Jewellery: Queen Victoria Museum and Art Gallery, Launceston.
1986 Fashion Expo: Centrepoint, Sydney.
1985 Queensland Jewellery Workshop: Cintra House Galleries, Brisbane.
1985 The Earring Show: Contemporary Jewellery Gallery, Sydney.
1985 To Scale: Crafts Council of Queensland touring exhibition, Regional Queensland [exhibition catalogue].
1984 National Craft Awards: Northern Territory.
1983 Invitation Christmas Exhibition: Crafts Council of Queensland, Brisbane.

PUBLIC ART COMMISSIONS

2010 Concepts: Stones Corner Urban Centre, Brisbane City Council, Brisbane.
2008 Ipswich Houses Commission, (Barbara Heath in collaboration with Malcolm Enright), Ipswich Art Gallery, Ipswich.
2007 Caxton Street Artworks, Gateway, PoleCollar, Roadway Discs, BCC Suburban Centre Improvement Project, Brisbane.
2006 Counterpoint, (with Mandy Ridley) BCC, Taringa, BCC Suburban Centre Improvement Project, Brisbane.
2004 Botanica, sculptural screening wall, (with Matt Tobin), Roma Street Parklands, Brisbane.
2004 Breezeway Lattice, stainless steel door handles/lift plates, Brisbane Magistrates Court, Brisbane.
2003 Swell, stainless steel sculpture, Gold Coast City Council Administration Building, Gold Coast.
2003 Untitled, Aluminium door handles, QEII Sport Stadium, Brisbane.
2002 Crustacea, seven steel sculptures, Cooloola Sunshine Institute of TAFE, Mooloolaba campus, Central Courtyard, Mooloolaba.
2002 TAFE, Campus Facade, design and art work (in collaboration with architect Russell Hall), Logan Institute of TAFE, Browns Plains campus, Browns Plains.
1999 A Tree a Rock a Cloud, titanium and stainless steel sculpture, Queensland Investment Corporation, Central Plaza 2, Brisbane.
1998 Net, stainless steel sculpture, Department of Public Works, Neville Bonner Building, Brisbane.

DESIGN INDUSTRY COMMISSIONS

2005 Griffith University, Minale Bryce, university mace.
2000 Big Bridge, stainless steel front door handle.
1999 Australia Council, presentation brooches.



Exhibition: Brooch Constellation 4
Makers Mark, Melbourne 2005.



Necklace: Silver, 18ct Yellow Gold, bar & ring clasp, polished Onyx tab set, cast Seal drop, oval Maw Sit Sit beads. Handmark Gallery Hobart, Tasmania 2013.



Public Artwork Sculpture entitled:
A Tree A Rock A Cloud 1999.
Queensland Investment Corporation,
Central Plaza 2 Brisbane.

1995 Bligh Voller Architects, bronze door handles.
1992 Haysom Group Architects, door handles.
1988 Jonathan Sceats EyeTech, design prototypes of metal spectacle frames.
1987 Barry Taft's Covers Fashion Label, range of jewellery.

PUBLIC COLLECTIONS

Ipswich Regional Gallery, Ipswich.
State Library of Queensland, Brisbane.
Art Gallery of Western Australia, Perth.
Arts Queensland, Department of Education and Arts, Brisbane.
Powerhouse Museum, Sydney.
Queen Victoria Museum and Art Gallery, Launceston.
Queensland Art Gallery, Brisbane.
Griffith University Art Collection, Brisbane.

AWARDS AND GRANTS

2009 Queensland Government,—Arts Queensland Development & Presentation Grant.
2008 Redcliffe Craft Award—2nd Prize, Moreton Bay Regional Council.
2006 Australia Council, Visual Arts Board,—Skills & Arts Development.
2005 The Brisbane Magistrates Court by Cox Rayner Architects in joint venture with Ainsely Bell & Murchison Architects,—Art and Architecture Award 2005.
2005 Queensland Government,—Project Grant.
2004 Royal Australian Institute of Architects (Queensland chapter)—State Award for Art & Architecture Awards, Queensland Architecture Awards 2004.
1996 Queensland Government,—Queensland Government Arts Grant.
1996 Australia Council, Visual Arts/Craft Board,—Project Grant, Development.
1992 Queensland Government,—Queensland Government Arts Grant.
1987 Australia Council, Visual Arts/Craft Board,—Workshop Development Grant.
1986 Australia Council, Crafts Board,—Crafts Training Grant.
1983 Westpac Craft Award.

BOOKS

2012 'Life in your hands - Art from Solastalgia': Touring catalogue. pp.26–29.
2012 100 women, '100 brooches, 100 stories': Second Edition, Hard Cover. 134 pages, pp.18.
2012 Tinsmith: An ordinary romance. 36 page touring catalogue, published by Artisan.
2010 Tinsmith: 'New tricks from old trades' - Self published research documents. 16pp.
2010 Williamson, Jade. The Ipswich House 'The Chestnuts and Mona Cottage' pp.18–21.
2009 Burton-Jones, Joan. 'Queenslanders All Over. p.417.
2008 Bravura - Arts Queensland review of Cultural Contemporary Talent pp.28–29.
2007 Design - Discussion Paper, Queensland Centre for Design. p.4.
2007 Mornement, Adan & Caroline. 'Galleries of Australia & New Zealand'. Artisan pp.51.
2004 McAulay, Bettina. 'Other significant art: ArtWorks Queensland'. Eds Judith Wassell & Maria Friend. Public Art Agency and Department of Public Works, Brisbane, pp.38–9.
2004 Stafford, J, Wood, P, Brecknock, R, Rayner, M & Younger, J. 'Engagement: Art + Architecture— Art Built-in Brisbane Magistrates Court'. Department of Justice and Attorney, General and Public Art Agency, Walter Construction and Cox Rayner Architects, 2004.
2004 Le Van, Marthe (ed.). '1000 Rings: Inspiring Adornments for the Hand'. Lark Books, Asheville, U.S.A.
2003 Llew M. 'public art + practice: East + West' Shanghai ke xue ji shu chu ban she, Shanghai.
2000 Beck, H, Cooper, J, Betsky, A, Connah R, Feireiss, K, Glusberg, J, Heneghan, T, Mostafavi, M, Riley, T, Salazar, J. '10 X 10: 100 Architects, 10 Critics'. Phaidon Press, London.
1998 Anderson, Patricia. 'Contemporary Jewellery in Australia and New Zealand'. Craftsman House, Singapore.
1992 Cochrane, Grace. 'The Crafts Movement in Australia: A History'. University of New South Wales Press, Sydney.
1989 Burch, Anna. 'New Icons'. Jewellery Australia Now, pp.5–58. Craft Australia.

JOURNAL AND NEWSPAPER ARTICLES

2013 Macdonald, Lucy. 'Jeweller forges landscape links' Style - Mercury, p.41.
2012 Hennessy, Carly. 'Jeweller treasures old tin gems' The Sunday Mail April 8.
2011 Martian, Tim. 'Project built with love' Saturday Magazine - Mercury. pp.4–6.
2011 Martian, Tim. 'Bypassed but not forgotten' Saturday Magazine - Mercury. pp.9–11.
2007 Reily, Justine. 'Snapshot' Brisbane News p.7 November 21–27.
2006 Shaw, Elizabeth. Lemel State Report. pp.10–11.
2006 Ahrens, Prue. Eyeline 61 - Reviews. QAG - Jeweller to the Lost solo show. p.51.
2007 McCarthy, Karen. 'Hot Spots Cool Shops' Inside/Out p.37 November.
2006 Apelgren, Janne. 'Ultra shopping' WISH Magazine. The Australian p.34 May.
2006 Noonan, Kathleen. 'The colour of memories'. Courier Mail Last Word p.40.
2006 Carroli, Linda. 'Reading the Library'. Eyeline, no.59, pp.40–44.
2005 Andresen, Brit. 'On Barbara Heath'. Object, no.48, pp.44–45.
2005 Brown, Phil. 'Gem of an idea'. Brisbane News [art & culture review] November 9–15 p.37.
2005 Bray, Nick. 'Every piece tells a story'. Courier Mail BAM Section,



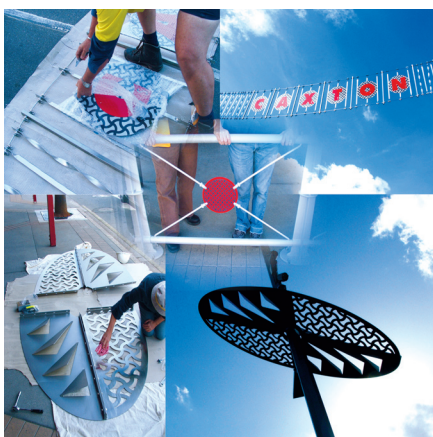
Ring retail stock: available at venues in Australia, New Zealand and the USA.



Exhibition: Brooch Lace White Enamel Fusion 18ct Yellow Gold Coral. Katherine Kalaf Gallery, Perth. September 2004.



Exhibition: Ring Antique carved Jade Fresh water Pearls 18ct Yellow Gold White Enamel Fusion. Aaron Faber Gallery NYC 2007.



Public Artwork: Caxton Street SCIP Brisbane City Council 2007.

October 15–16, p.3.

2005 Gundelach, Amelia. 'Barbara Heath's Manifesto—the language of jewellery'. [exhibition catalogue] Queensland Art Gallery Survey Show. pp.4–11.

2005 Seear, Lynne. 'Commissioning Barbara'. [exhibition catalogue] Queensland Art Gallery Survey Show. pp.12–15.

2005 Frazer, Margie. 'Off the Body'. [exhibition catalogue] Queensland Art Gallery Survey Show. pp.16–19.

2005 Were, Ian. 'Creative Partnerships— a personal story'. [exhibition catalogue] Queensland. Art Gallery Survey Show. pp.20–23.

2005 Bogle, Michael. 'The Business of jewellery'. [exhibition catalogue] Queensland Art Gallery Survey Show. pp.26–29.

2005 Gundelach, Amelia. 'Jeweller to the Lost'. Profile in Artichoke12. pp.122–124.

2005 Koremans, Sonja. 'Art House'. Brisbane News, [home front review] September 14, p.32.

2005 Martin–Chew, Louise. 'Binding the loose leaves of Women's history'. The Australian [visual art review], September 6, p.14

2005 Armitstead, Jacqueline. 'Sufference— women's artists' books'. [exhibition catalogue] State Library of Queensland and Craft Queensland. pp.6–7.

2005 Brough, Judith. 'Collectables— vintage collections of contemporary craft practitioners'. [exhibition catalogue] Craft Queensland, p.2.

2005 Brown, Phil. 'Curocity Shop'. Brisbane News [art & culture review], July 13–19, p.25.

2005 Box, Tonya. 'What a gem'. Courier Mail Home, July 9–10, pp.10–11.

2005 Thomson, Sheona. Moulis, Anthony. 'Brisbane Magistrates Court'. Architecture Australia Vol 94 no.3, p.68.

2004 Heath, Barbara. '10 makers/40 objects'. Object, no.44, pp.32–9.

2004 Martin-Chew, Louise. 'Visible darkness'. [exhibition review] Object, no.44, p.74.

2004 Were, Ian. 'A tale of three cities'. Craft Arts International, no.60, pp.49–51.

2002 Devenport, Rhana. 'Collectors— Love addictions: Kirsti Simpson'. Object, no.39, pp.65–7.

2000 Anderson, Dr Lisa. 'A Tree, a Rock, a Cloud'. Artworker, Winter, pp.4–5.

2000 Devenport, Rhana. 'A little birdie told me: Barbara Heath's arcane hoard'. [exhibition review] Object, no.3, pp.84–5.

1999 Read, Jennifer. 'Art and the corporate environment: Gwyn Hanssen Pigott, Barbara Heath, Ron Hurley and Yenda Carson in the Neville Bonner building'. Art and Australia, vol.37, no.1, September–November, pp.108–111.

1999 Smith, Sue. 'Crafting urban baubles'. Courier-Mail, December 7, p.13.

1998 Anderson, Peter. 'Barbara Heath's Patron Maker and Jewel'. Object, no.2/98, pp.16–17.

1997 Devenport, Rhana. 'Clarence 'Rockefeller' Chafee: Phallus cult rings'. [exhibition review] Object, no.1/97, p.11.

1995 Ferres, Kay. 'Speaking from the void: Mad and bad women at the Queensland Art Gallery'. [exhibition review] Periphery, no.23, May, pp.18–20.

1992 Nelson, Robert. 'The place of jewellery: social & semiotic contexts'. Object, Spring, pp.29–31.

1992 Powell, Shirley. 'The Edge'. Belle, April–May, p.12.

1990 Bogle, Michael. 'Male jewellery: a vain pursuit?'. Sydney Morning Herald, November 6, p.7.

1988 Szulakowska, Urszula. 'Jewellery— sculpture as kinetic performance'. Eyeline, no.5, pp.6–8.

1988 Petelin, George. 'Consummate crafting from common materials'. Australian, January 28, p.10.

1987 Ramsay, Lehan. 'New Icons'. Eyeline, no.3, p.31.

1985 MacAllan, Roz. 'Art of Adornment'. Craft Arts, no.4, pp.9–96.

Barbara Heath & Malcolm Enright - Enright Heath Pty Limited (trading as):

Jeweller to the Lost - Gems, Bespoke Commissioned Jewellery, Retail Ranges in Australia, New Zealand & USA. Urban Archaeology - Sculpture, Public Artworks, Design & Digital Realisation. Collections.

Blog: <http://viewersite.wordpress.com/>

Directory: <http://www.co-opones.to/male/viewer/index.html>

Older web: <http://www.co-opones.to/barby/bhcom/index.html>

BARBARA HEATH
Jeweller to the Lost - Australia
<barby@co-opones.to>
Studio telephone +61 7 3856 2269